

SEA.AI

INSTALLATION MANUAL OFFSHORE 320 & 640

7.24.1 Eng version



SEA.AI Group

| SEA.AI GmbH | SEA.AI GmbH | SEA.AI Lda | SEA.AI SAS | SEA.AI Inc. |
|---|---|--|--|--|
| Siemensstrasse 60 4030 Linz AUSTRIA | Taborstrasse 20 1020 Vienna AUSTRIA | Rua António Champalimaud Lote 1, Piso 1, Sala 1.13B, 1600- 514 Lisbon PORTUGAL | Port La Forêt 29940 La Forêt Fouesnant FRANCE | 407 Lincoln Road, Suite 10F Miami Beach, FL 33139 USA |

SUMMARY

| | |
|---|----|
| 1- Precaution of use | 3 |
| 2- General informations | 4 |
| 3- System Components | 5 |
| 4- Installation | |
| 4.1- General view of the installation..... | 6 |
| 4.2- Vision Unit installation (VU) | 7 |
| 4.3- Attaching the vision unit (VU) bracket..... | 8 |
| 4.4- Mounting the vision unit (VU) on the bracket | 8 |
| 4.5- Connecting the vision unit (VU)..... | 9 |
| 4.6- Processing Unit installation (PU)..... | 10 |
| 4.7- Connecting the processing unit (PU) | 10 |
| 4.8- Installation examples..... | 11 |
| 5- Commissioning and configuration | 12 |
| 6- Connecting to the NMEA 2000 network | 15 |
| 7- Maintenance | 16 |
| 8- MFD compatibility | 17 |
| 9- Technical data | 18 |

The user must have previously registered online at the following address to obtain the serial password: https://sea.ai/user_registration/

1. PRECAUTION OF USE

- The SEA.AI system must be installed by an experienced marine electronics technician, improper installation may void the warranty.



WARNING

- Turn off the power before beginning to install the unit, as this may result in fire, electric shock or serious injury.
- Make sure that the power source is compatible with the voltage rating of the unit: connecting to an unsuitable power source may cause a fire or damage the unit.
- Do not disassemble or modify the equipment: this can result in fire, electric shock or serious injury.



WARNING

- Do not rely exclusively on the SEA.AI system to steer the boat: for the safety of the boat and the people on board, the captain must monitor all available navigation aids. SEA.AI is not a substitute for a proper lookout.
- Adjust the masthead vision unit correctly: the adjustment of the camera has a significant impact on the operation of the system.



WARNING

- Working at heights requires that safety instructions be followed.

2. GENERAL INFORMATIONS

- SEA.AI Offshore combines optical sensors and artificial intelligence to detect objects floating on your trajectory. SEA.AI automatically assesses the risk of collision in real time and warns of any possible danger.
- Having a SEA.AI system on board means improved safety for you and your crew.
- All SEA.AI systems can be controlled using the SEA.AI Oscar navigation app, which runs on smartphones and tablets (Android and iOS), on your chartplotter or on a computer.



| Model | Offshore 320 | Offshore 640 |
|--|--|-------------------------------------|
| Thermal camera | 2x FLIR BOSON™ 320 x 256 px, 50° | 2x FLIR BOSON™ 640 x 512 px, 50° |
| RGB camera | 5 Mpx low light vision 2592 x 1944 px, 110° | |
| Range détection | | |
| -Large size (yacht, fishing vessel...) | 1000m | 1500m |
| -Middle size (boat, beacon...) | 250m | 375m |
| -Small size (MOB, buoy...) | 100m | 150m |
| Detection | Thermal | Thermal & RGB |
| Weight | 990 g | 990 g |
| Dimensions | 190 x 143 x 106 mm | 190 X 143 x 106 mm |

3. SYSTEM COMPONENTS



Vision Unit (VU)



Processing Unit (PU)



Vision Unit Bracket



Wind sensor bracket



Cable "J1" PU Power supply



Cable "J2" VU Power supply
(Available in lengths from 25 à 70 m)



Cable "E1" Data RJ 45 connector
(Available lengths 6 m / 20 m)



Cable "E2" Data
(Available in lengths from 25 à 70 m)



In option :



Alarm on NMEA network



Adapter STNG to NMEA

4. INSTALLATION

- 4.1 General view of the installation



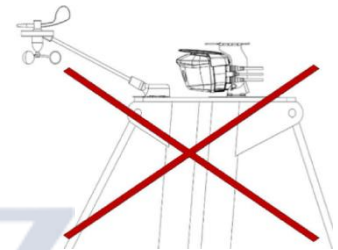
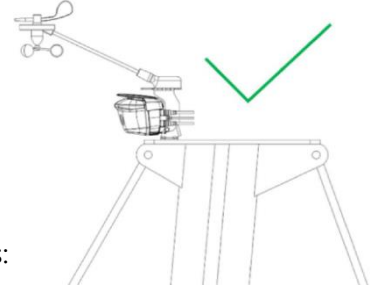
- 4.2 Vision Unit installation (VU)

The installation of the vision unit requires the following tools:

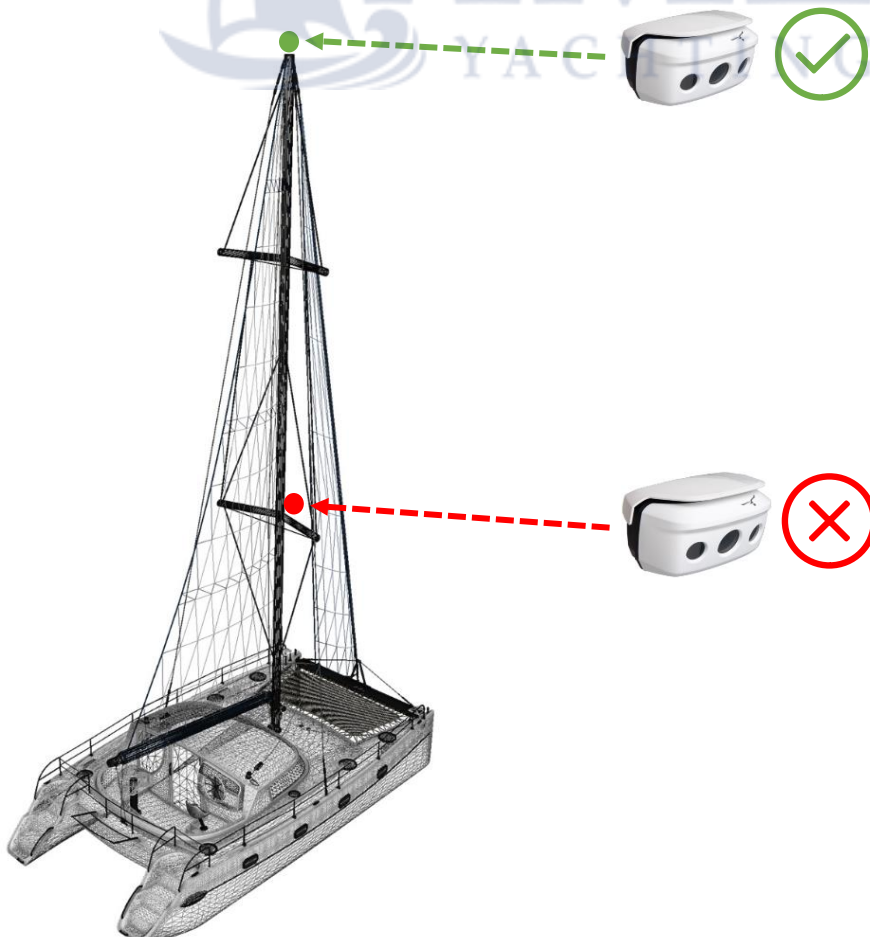
- . 8mm wrench
- . 8mm ratchet wrench
- . LAN tester
- . RJ45 adapter cable

The installation of the vision unit must comply with the following points:

- . The VU must be installed at the highest point of the boat
- . The VU must be installed at a minimum height of 8 meters
- . The field of vision of the VU must be completely clear.



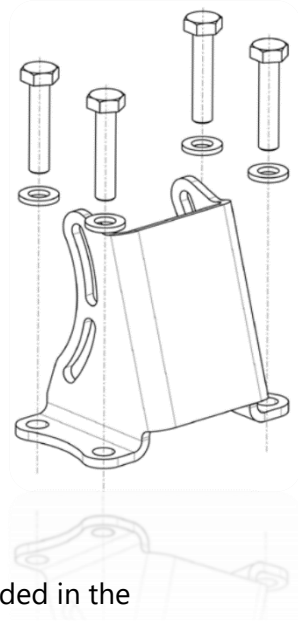
NOTE : Sufficient space at the rear of the VU must be provided for the proper handling of cables and electrical connectors.



- 4.3 Attaching the vision unit (VU) bracket

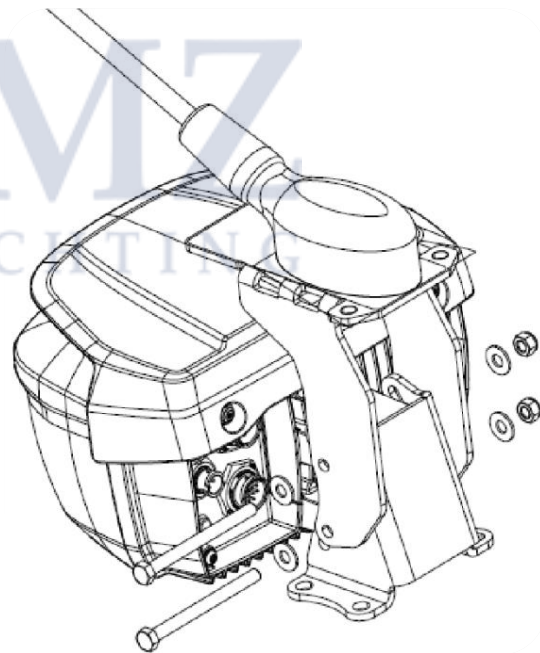
The following points must be observed when mounting the vision unit:

- . The VU bracket must be fixed with four screws (not included) adapted to the characteristics of the support on which it is mounted (drawings of the bracket available on page 18).
- . The fixing screws must be secured with threadlockers or locknuts.



- 4.4 Mounting the vision unit (VU) on the bracket

To attach the VU to the bracket, use the two screw/washer/nut sets provided in the installation kit.



NOTE : If necessary, an windsensor bracket, included in the installation kit can be attached to the VU bracket.



NOTE : The inclination of the VU will have to be adjusted during the commissioning (+/- 15°)

 **WARNING :**

The VU must not be painted or covered!



- **4.5 Connecting the VU**

After routing the cables, connect the E2 data cable (label A) and the J2 power cable (label B) to the corresponding sockets on the VU.



(A)



(B)



WARNING :

- Circular connectors must be properly locked.
- Cables must be properly secured so that their weight is not supported by the connectors.

- 4.6 Processing Unit installation (PU)

The PU must be fixed by means of six screws (not supplied) on a suitable support. The installation of the PU must correspond to the following points:

- The PU must be installed in a clean, ventilated and dry place.
- The PU can be installed flat but not upside down.
- The PU can be tilted on a wall with the connectors downwards.

- 4.7 Connecting the processing unit (PU)

Connect the J1 power cable to the PU and the boat's electrical system:

- Supply voltage 12 / 24 V.
- The power supply must be protected by a 3A FAST-BLOW type fuse.
- The power supply must be subject to an independent switch.

Connect the power cable from the J2 vision unit to the PU.

NOTE : The J1 and J2 connectors must be pushed in until they "click".

Connect the E1 data cable to the PU (marker E1) and to the user interface (MFD, PC).

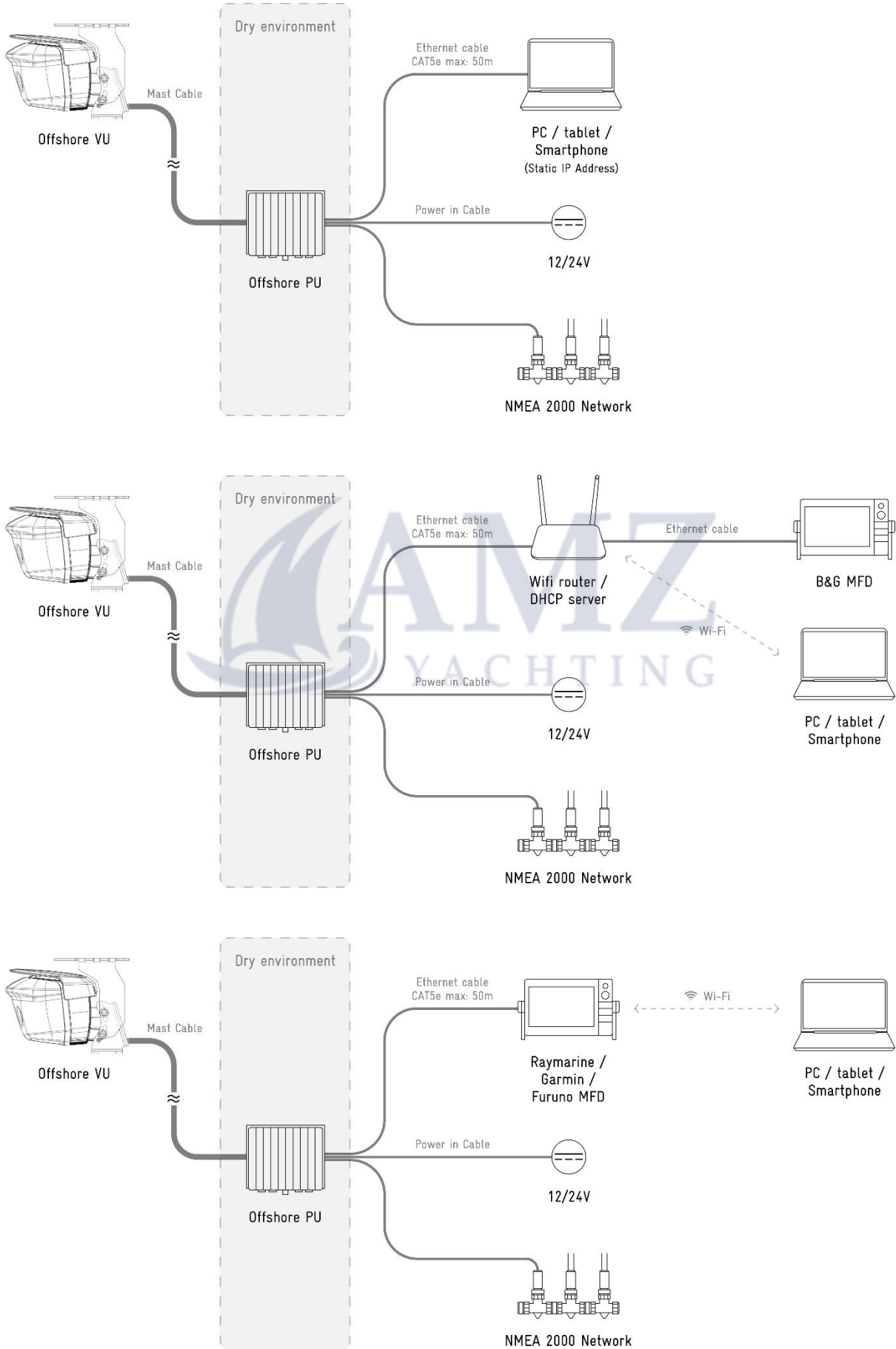
Connect the E2 data cable from the vision unit to the PU (marked E2).



NOTE : The connectors for the E1 and E2 sockets (RJ45 type) must be held in place with their locking bayonet.

| Name | Fonction | Destination | Comments |
|------|--------------------|-------------------|--------------|
| E1 | Data cable | MFD, router, PC | Data 4TP |
| E2 | Data cable | Vision Unit (VU) | Data 4TP |
| J1 | Power supply cable | Power supply | 12-24 V |
| J2 | Power supply cable | Vision Unit (VU) | 36 V |
| J3 | NMEA 2000 Data | NMEA 2000 network | Not included |

- 4.8 Installation example.



5.1 INSTALLER COMMISSIONING

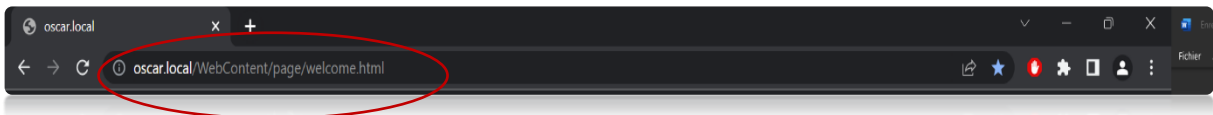
- Turn on the SEA.AI system (start-up time is approximately two minutes).
- On MFD, the access to the application is done via the SEA.AI icon (appears automatically).
- From a computer, use the following links to access the SEA.AI home screen.

-System integrated in a network with DHCP server (router) :

<http://oscar.local/WebContent/page/welcome.html>

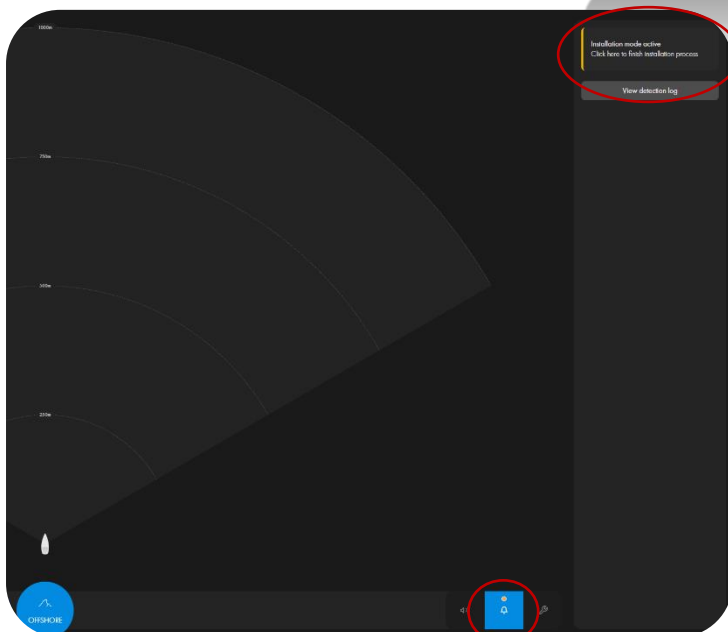
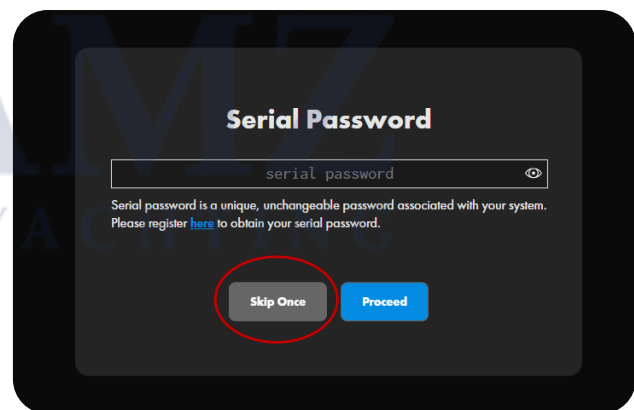
-System directly connected to a computer (static IP address) :

<http://192.168.17.21/WebContent/page/welcome.html>



An installer mode is available for settings and parameters of the SEA.AI system (pages 14 & 15) in the absence of a serial password.

This unique access is available via the Serial Password, Skip Once page.



Once all settings and parameters have been completed, you can log out of installer mode by clicking on the "Click here to finish installation process" button on the notification page.

Following this action, the next connection to the SEA.AI system must be made using the Serial Password.

5.2 FINAL USER COMMISSIONING

The user must have previously registered online at the following address to obtain the serial password: https://sea.ai/user_registration/

- Turn on the SEA.AI system (start-up time is approximately two minutes).
- On MFD, the access to the application is done via the SEA.AI icon (appears automatically).
- From a computer, use the following links to access the SEA.AI home screen.

-System integrated in a network with DHCP server (router) :

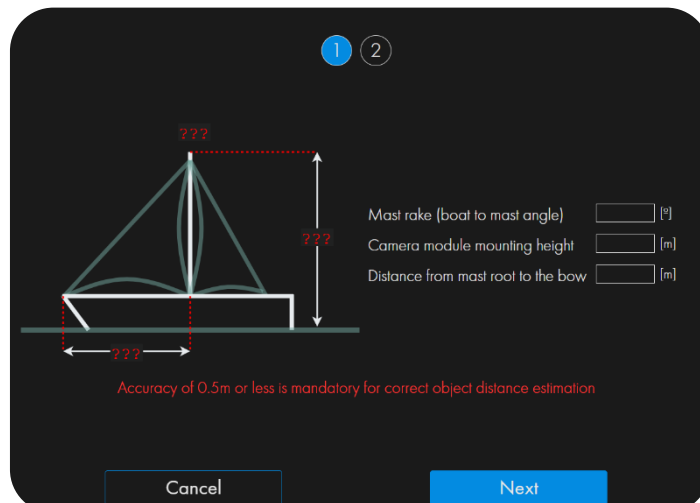
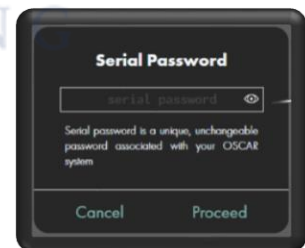
<http://oscar.local/WebContent/page/welcome.html>

-System directly connected to a computer (static IP address) :

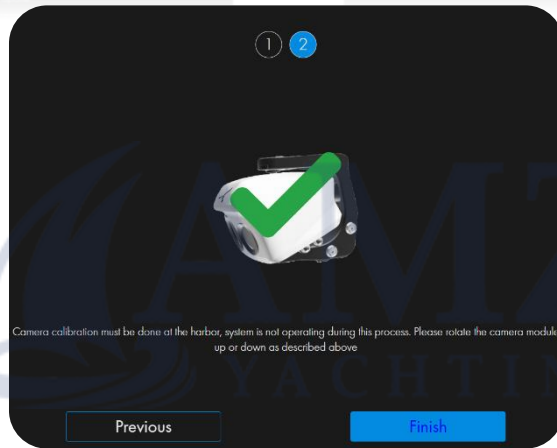
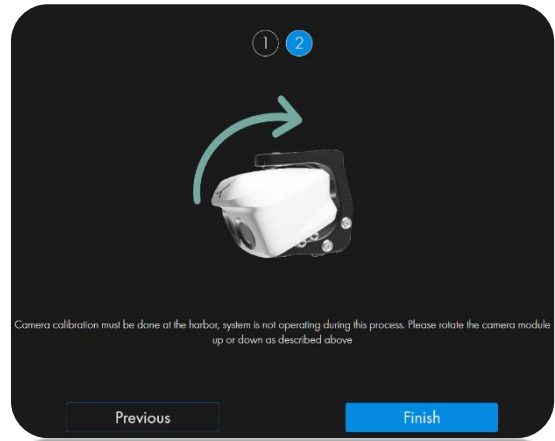
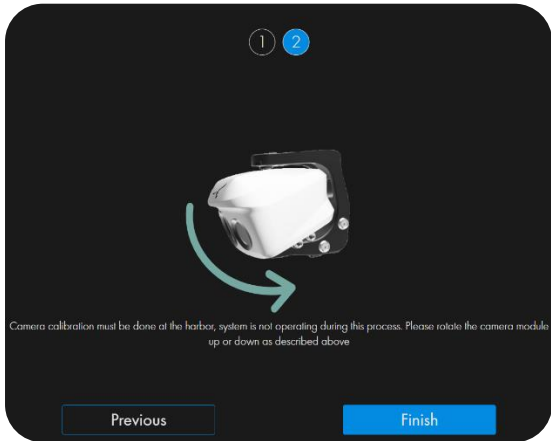
<http://192.168.17.21/WebContent/page/welcome.html>



- Select the language.
- Enter the serial password
- Fill in the position of the vision unit (VU) on the boat with the following information:
 - . Mast rake
 - . Height of the VU above sea level
 - . Distance from mastbottom to bow



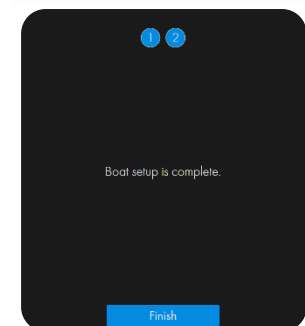
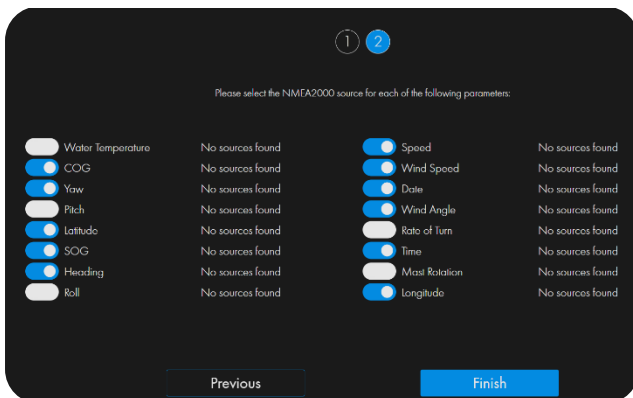
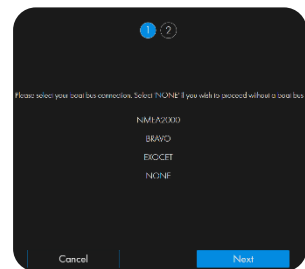
- Adjust the angle of the vision unit as indicated on the interface. (needs 2 technicians: one on top of the mast; one at the display).



Configure SEA.AI with the onboard information network.

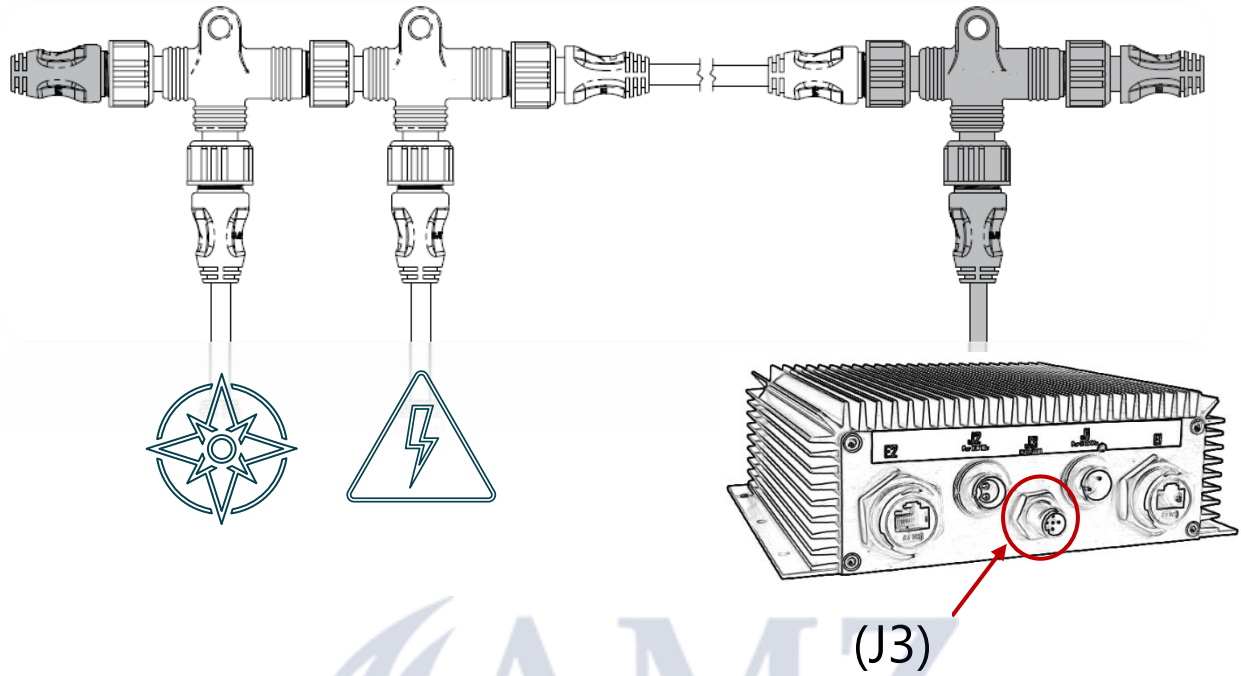
- Select the network type (NMEA 2000, BRAVO, EXOCET, NONE).
- Select the information to be displayed

NOTE: Uncheck "No sources found" data parameters.



6. Connecting to NMEA 2000 network

Connect a branch of the NMEA 2000 network to the J3 connector on the processing unit (PU)



| PGN | Description |
|--------------------|-------------|
| Water Temperature | 130311 |
| Course over ground | 129026 |
| Yaw | 127257 |
| Pitch | 127257 |
| Latitude | 129025 |
| Speed over ground | 129026 |
| Heading | 127250 |
| Roll | 127257 |
| Speed over water | 128259 |
| Wind speed | 130306 |
| Date | 126992 |
| Wind angle | 130306 |
| Rate of turn | 127251 |
| Time | 126992 |
| Mast rotation | 65330 |
| Longitude | 129025 |

7. MAINTENANCE

The system should always be updated to the latest available software version.

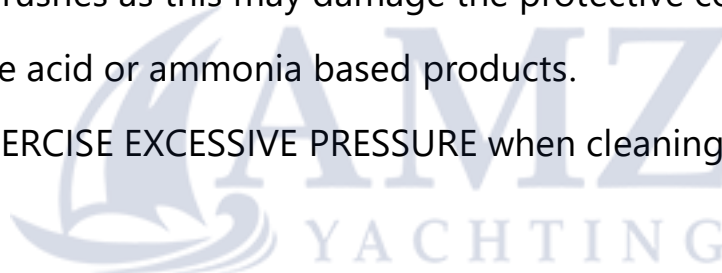
You should update your software frequently to benefit from all the improvements.

The software can be updated with the SEA.AI Oscar Navigation application.

The vision unit (VU) and camera lenses should be cleaned periodically, clean the lenses if you notice a decrease in image quality or dust accumulation.

WARNING :

- DO NOT SCRUB the lenses with a dry cloth or abrasive material such as paper or brushes as this may damage the protective coating.
- DO NOT use acid or ammonia based products.
- DO NOT EXERCISE EXCESSIVE PRESSURE when cleaning



Be especially careful when cleaning the lenses. The anti-reflective coating could be damaged by improper cleaning..

Clean the vision unit housing with a soft, clean cotton cloth. You can dampen the cloth and use a mild detergent if necessary.

Rinse the camera lenses with clean water to remove dust particles and salt deposits. Allow to dry naturally.

If stains or streaks remain. Gently rub the lenses with a clean microfiber cloth or soft cotton cloth.

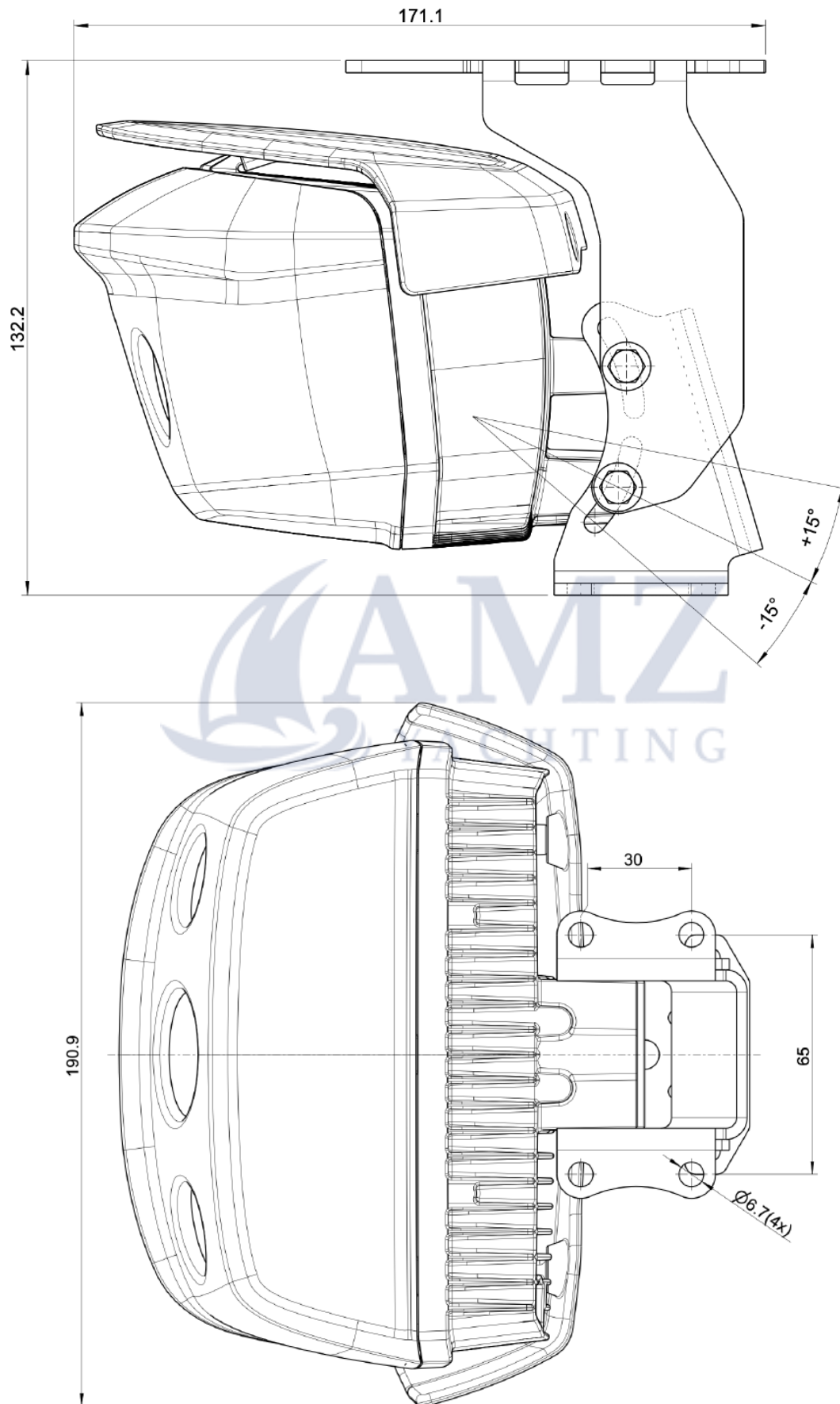
If necessary, use isopropyl alcohol or a mild detergent to clean up any remaining traces.

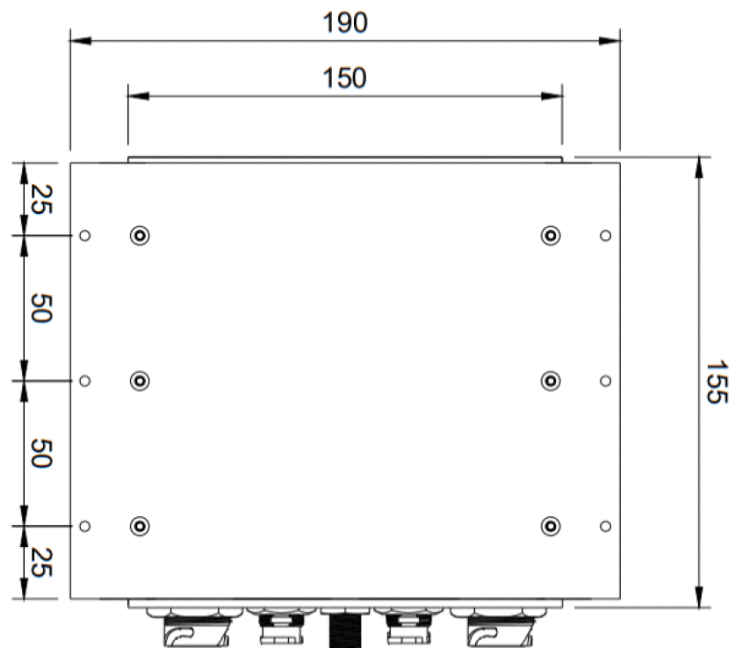
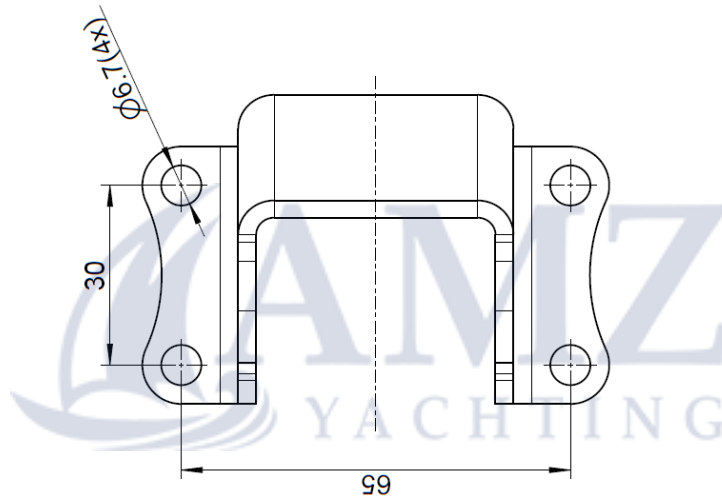
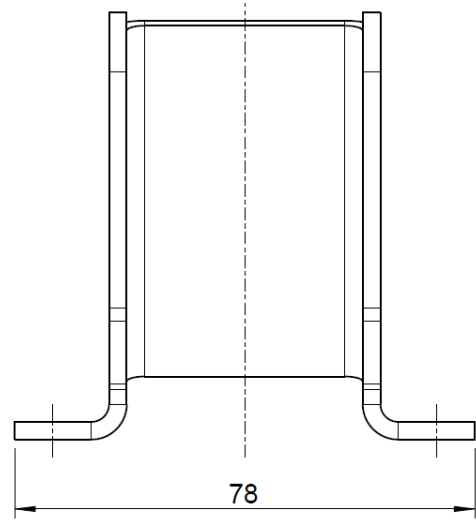
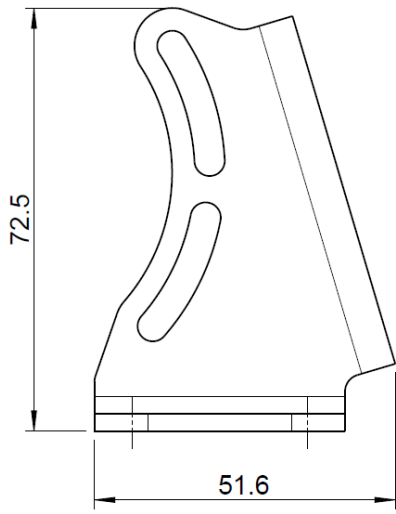
8. MFD COMPATIBILITY

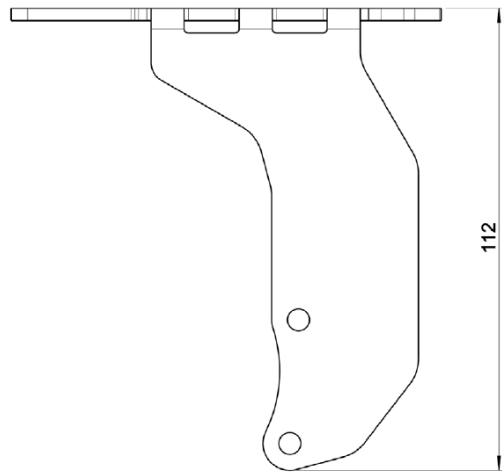
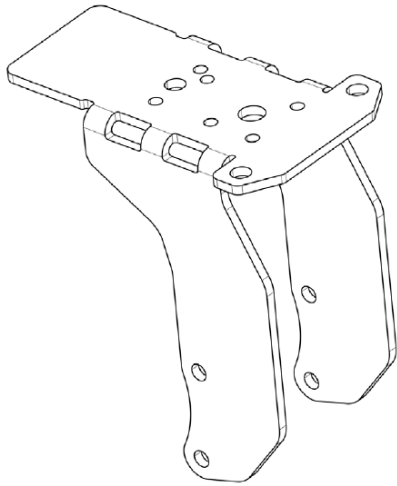
| One, Offshore, Competition | | | | | |
|----------------------------|-------------------------------------|-------------------------------------|-------------------------------------|-------------|--|
| Brand | Model | App Running | Internal MFD Alarm | NMEA Buzzer | Comments |
| B&G | Zeus3 | <input checked="" type="checkbox"/> | <input checked="" type="checkbox"/> | reccomended | App is running but very slow performance due to slow MFD HW , wifi router necessary |
| | Zeus3S | <input checked="" type="checkbox"/> | <input checked="" type="checkbox"/> | reccomended | wifi router necessary |
| | Vulcan | <input checked="" type="checkbox"/> | <input type="checkbox"/> | reccomended | App is running but very slow performance due to slow MFD HW , wifi router necessary |
| | Nemesis | <input type="checkbox"/> | <input type="checkbox"/> | reccomended | |
| Simrad | evo3 | <input checked="" type="checkbox"/> | <input checked="" type="checkbox"/> | reccomended | wifi router necessary |
| | evo3S | <input checked="" type="checkbox"/> | <input checked="" type="checkbox"/> | reccomended | wifi router necessary |
| | | | | | |
| Garmin | One Helm compatible MFDs | <input checked="" type="checkbox"/> | <input checked="" type="checkbox"/> | reccomended | |
| | | | | | |
| Furuno | TZtouch3 series: TZT9F/12F/16F/19F | <input checked="" type="checkbox"/> | <input type="checkbox"/> | required | |
| | TZtouch2 series: TZT2BB/TZTL12F/15F | <input checked="" type="checkbox"/> | <input type="checkbox"/> | required | |
| Raymarine | Axiom | <input checked="" type="checkbox"/> | <input type="checkbox"/> | required | LIGHTHOUSE 3 - Edgartown - v3.13 or higher Update |
| | Axiom Pro | <input checked="" type="checkbox"/> | <input type="checkbox"/> | required | LIGHTHOUSE 3 - Edgartown - v3.13 or higher Update |
| | Axiom XL | <input checked="" type="checkbox"/> | <input type="checkbox"/> | required | LIGHTHOUSE 3 - Edgartown - v3.13 or higher Update |



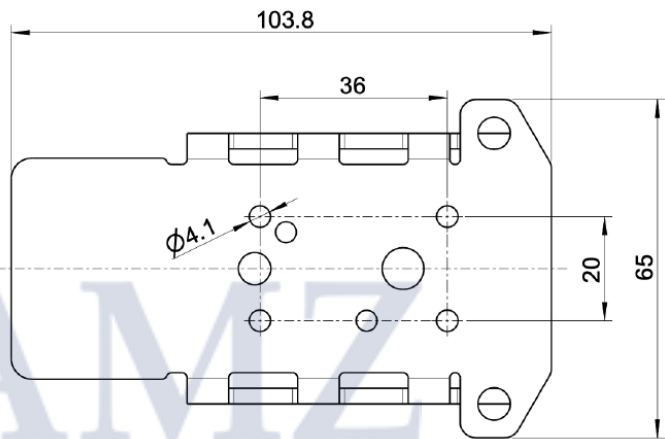
9. TECHNICAL DATA



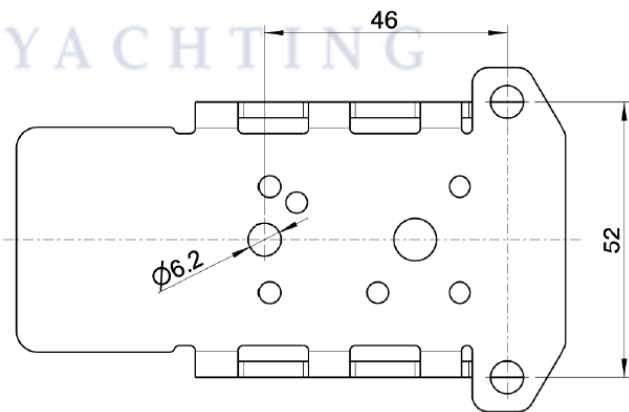




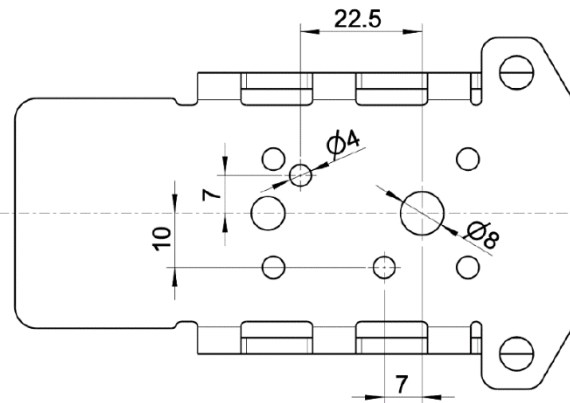
B & G



GARMIN



RAYMARINE



SERVICE CONTACT

SEA.AI SAS

29940 La Forêt-Fouesnant | France

+33 (0) 699 726 241

service@sea.ai



WhatsApp SEA.AI Service

